

BD Preset™ ve BD A-Line™ Arteriyel Kan Gazı Enjektörleri

BD arteriyel kan gazı analizlerinizde preanalitik varyasyonu minimize etmek, işlem ve taşıma kolaylığı sağlamak için geniş bir ürün yelpazesi sunuyor. Ürün portföyü BD Vacutainer® Eclipse™ güvenli arteriyel kan alma enjektörleri seçeneğiyle basit ve efektif bir şekilde kan almanızı sağlarken sizleri iğne batma yaralanmaları riskine karşı da koruyor. Tek elle aktive edilebilen ve duyulabilir bir klik sesi ile sizi uyaran patentli güvenlik kalkanı ile arterden kan almanın en kolay ve en güvenli yolu.

Sprey-dry teknolojisi ile enjektör çeperine püskürtülmüş kalsiyum dengeli heparin IFCC standartlarına uyum sağlar, örnek dilüsyonunu engeller ve pıhtı oluşumunun önüne geçerek preanalitik hata riskini düşürür.

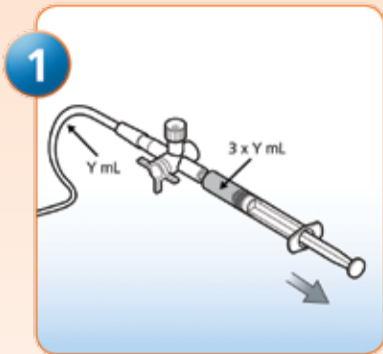
Otomatik doluma imkan sağlayan Preset™ özellikli enjektör seçenekleri ile arteriyel kan almada sağlık çalışanına rahat bir çalışma ortamı sağlıyor.



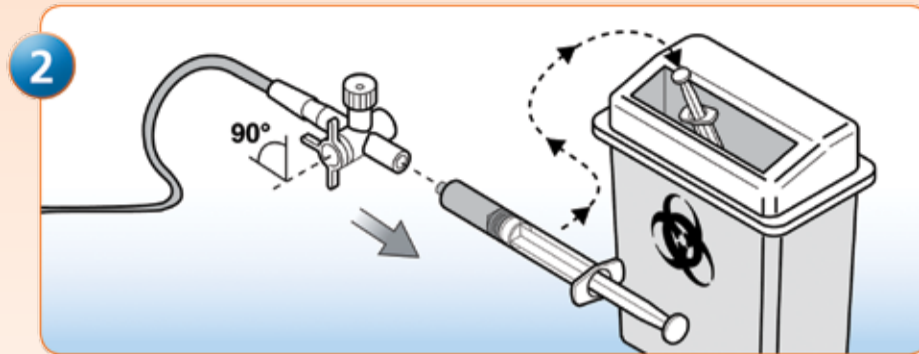
BD A-Line™

Collection from an Arterial Line by Aspiration

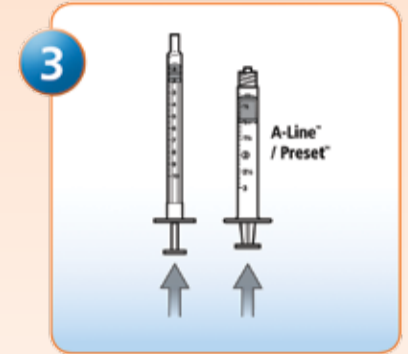
Simple • Fast • Reliable Results



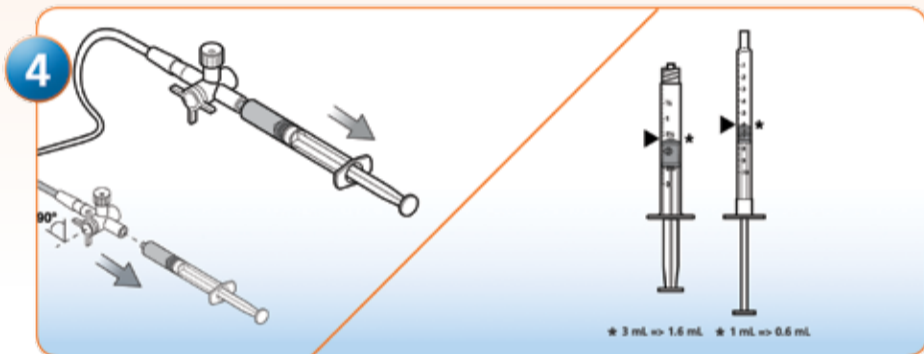
1 According to your institution's policy, purge the catheter line.



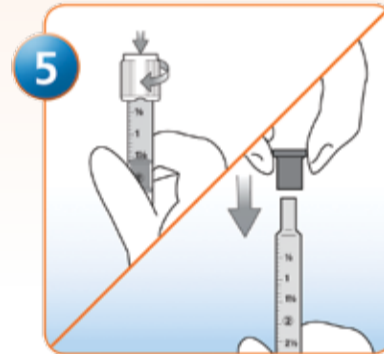
2 Dispose of plastic discard syringe following your institution's procedures.



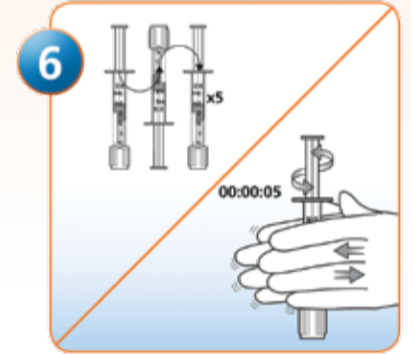
3 Fully depress plunger of device before securely connecting the device to the pre-purged line's stopcock adapter.



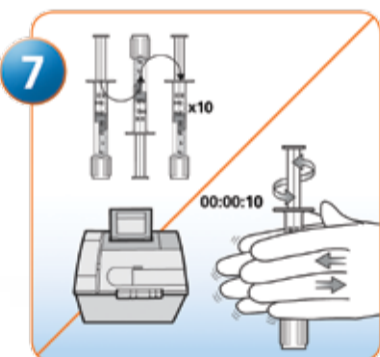
4 Turn stopcock to open position and slowly pull plunger back to draw recommended sample volume of 1.6 mL for 3 mL device and 0.6 mL for 1 mL device. Turn stopcock to closed position and remove device.



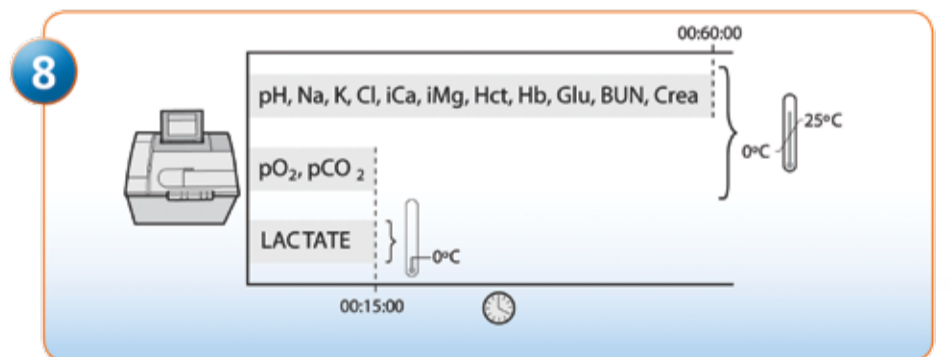
5 If necessary, expel entrapped air bubbles following your institution's procedures. Twist on BD Vacutainer® Hemogard™ Tip Cap or push on Black Rubber Tip Cap to secure device.



6 Immediately after collection, always mix the sample thoroughly to ensure complete anticoagulation. Perform 5 complete inversions and then roll the device between your palms for 5 seconds. The sample should then be analysed.



7 If analysis is not conducted immediately, mix sample again: 10 complete inversions and roll syringe for 10 seconds. Mixing is particularly critical if haemoglobin or haematocrit is to be measured.



8 Analyze within 15 minutes for pO₂, pCO₂, and lactate. For other critical care analytes, device may be stored for up to 1 hour.

BD A-Line™ Ordering Information:

	Cat. No.	Syringe Size (ml)	Draw (ml)	Tip Type	Closure
	364356	1 ml	0.6 ml	Slip Tip	Conventional
	364378	3 ml	1.6 ml	Luer-Lok™	Hemogard™
	364376	3 ml	1.6 ml	Slip Tip	Conventional

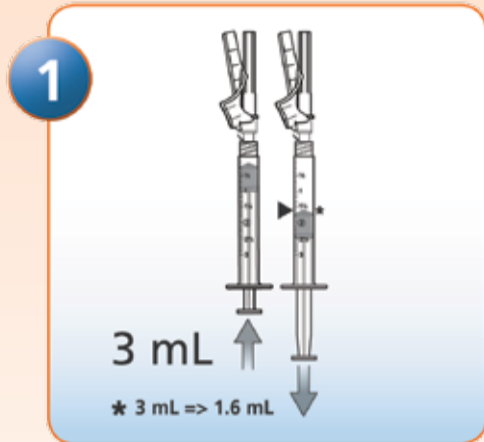


BD Diagnostics - Southern Africa
The Woodlands Office Park 20
Woodlands Drive, Bldg. 31, 2nd Floor
Woodmead, 2199
Johannesburg, South Africa
Tel.: + 27 11 603 2620
Fax: + 27 11 603 2640
www.bd.com/za

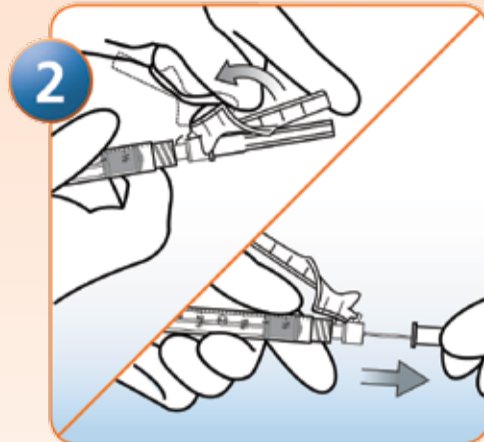
BD Preset™ with BD Eclipse™ Safety Needle

Percutaneous Arterial Collection by Automatic Fill

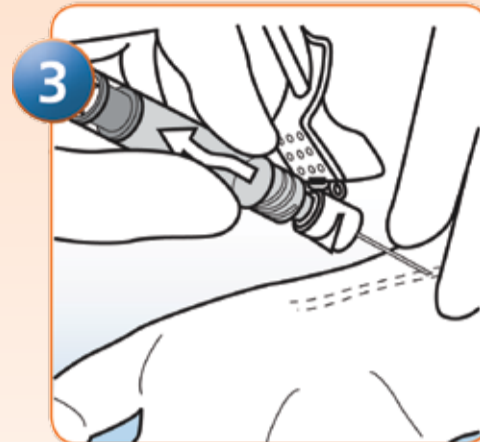
Simple • Fast • Reliable Results



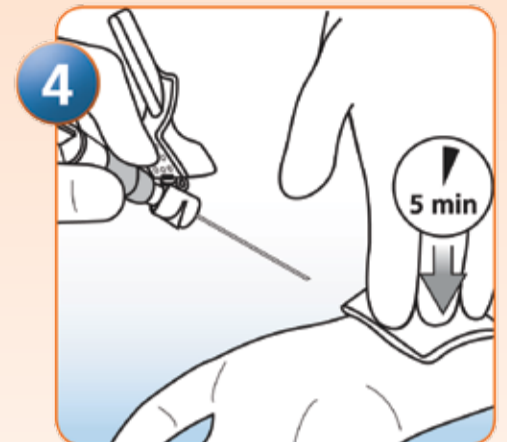
1 Fully depress syringe plunger; then, set plunger at recommended sample volume (1.6 mL).
* 3 mL => 1.6 mL



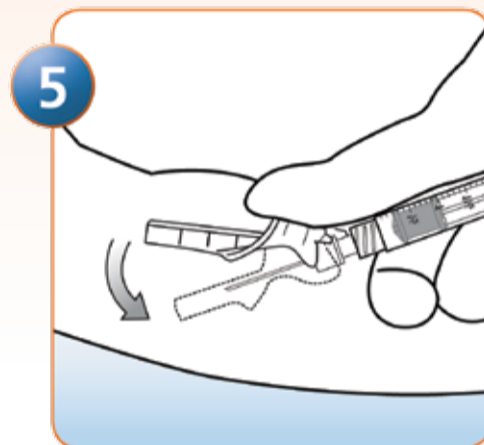
2 Gently position pink safety shield straight back toward the collection device. Twist and pull needle cap straight off.



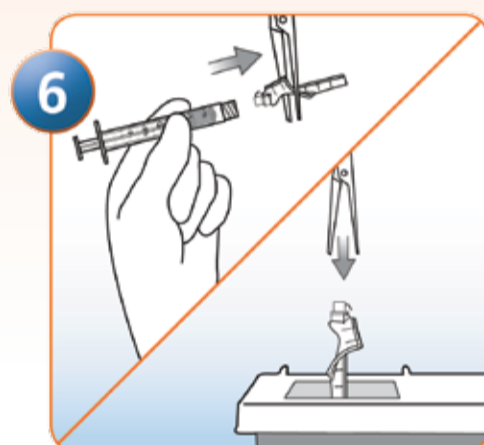
3 According to your institution's procedures, locate artery, prepare site, and perform puncture. Allow blood to automatically fill collection device.



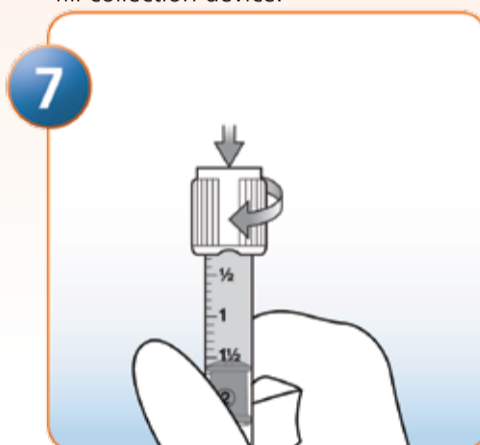
4 Withdraw needle from the artery and apply firm direct pressure to puncture site for 5 minutes.



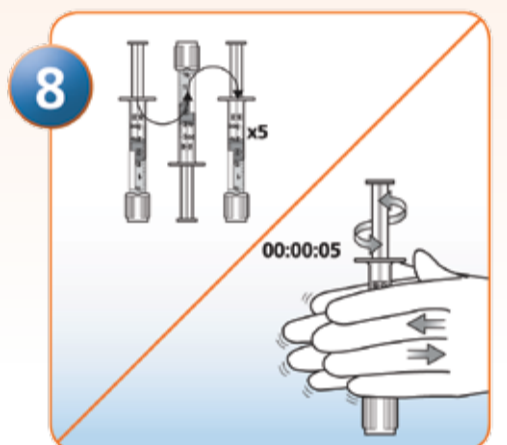
5 Immediately after removing the needle from the artery, activate safety shield by positioning index finger or thumb (of hand holding the collection device) squarely on safety shield finger pad and push safety shield forward to cover needle. An audible click may be heard. Lock shield into place and inspect. DO NOT attempt to activate safety shield by pushing against a hard surface.



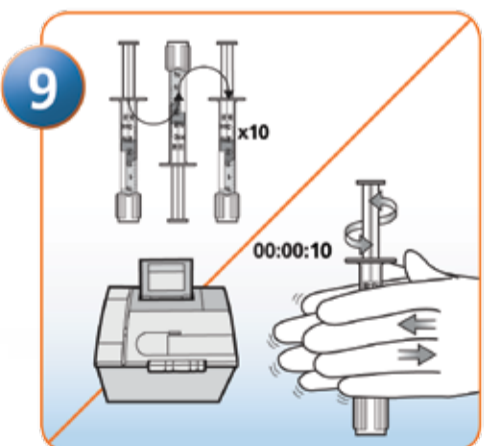
6 Once safety shield is fully engaged, twist needle off the collection device and discard needle following your institution's procedures. If necessary, expel entrapped air bubbles following your institution's procedures.



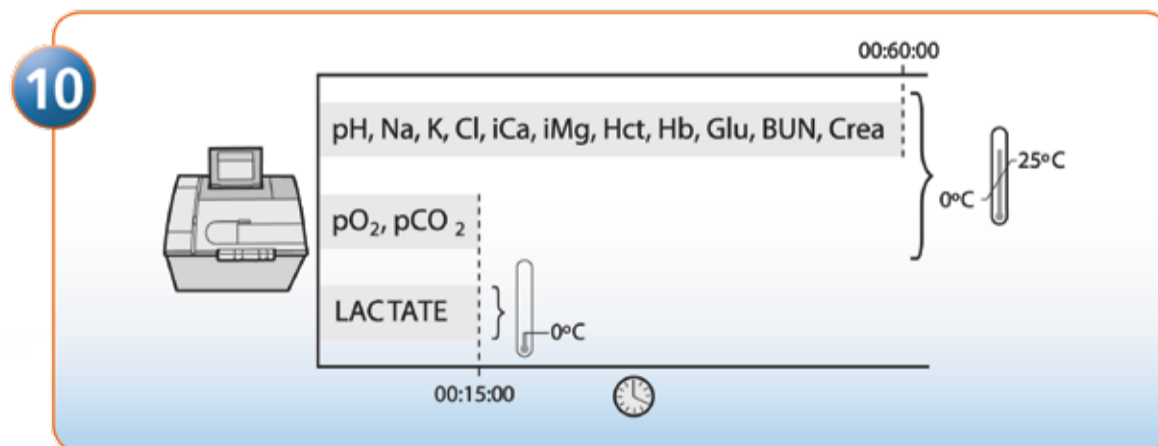
7 Twist on BD Vacutainer® Hemogard™ Tip Cap to secure device.



8 Immediately after collection, always mix the sample thoroughly to ensure complete anticoagulation. Perform 5 complete inversions and then roll the device between your palms for 5 seconds. The sample should then be analysed.



9 If analysis is not conducted immediately, mix sample again: 10 complete inversions and roll syringe for 10 seconds. Mixing is particularly critical if haemoglobin or haematocrit is to be measured.



10 Analyze within 15 minutes for pO₂, pCO₂, and lactate. For other critical care analytes, device may be stored for up to 1 hour.

BD Preset™ & BD Eclipse™ Safety Needle Ordering Information:

	Cat. No.	Syringe Size (ml)	Draw (ml)	Tip Type	Closure
	364390	3 ml	1.6 ml	Luer-Lok™	Hemogard™
	364391	3 ml	1.6 ml	Luer-Lok™	Hemogard™
	364393	3 ml	1.6 ml	Luer-Lok™	Hemogard™



BD Diagnostics - Southern Africa
The Woodlands Office Park 20
Woodlands Drive, Bldg. 31, 2nd Floor
Woodmead, 2199
Johannesburg, South Africa
Tel.: + 27 11 603 2620
Fax: + 27 11 603 2640
www.bd.com/za