






# Rotavirus and Adenovirus Rapid Test

Screening Test for Rotavirus and Adenovirus Infection

-  Reliable Performance
-  Easy to Use
-  High sensitivity and Specificity

# Rotavirus and Adenovirus Rapid Test

Rotavirus has been known as the most common viral agent to cause viral gastroenteritis. Rotaviral gastroenteritis is mainly contributed by group A rotavirus which may result in mortality for populations at risk such as infants, the elderly and immunocompromised patients. Rotavirus is transmitted by oro-faecal route with an incubation period of 1-3 days.

The enteric adenoviruses, primarily species F types 40 and 41, have emerged as a leading cause of viral gastroenteritis in children, second in importance only to the rotaviruses. Infections are most frequently seen in children less than two years of age, but have been found in patients of all ages.

## General Information

Flowflex Rotavirus Rapid Test, Adenovirus Rapid Test and Rotavirus/Adenovirus Combo Rapid Test are the lateral flow chromatographic immunoassays for the qualitative detection of rotavirus or adenovirus antigen in human feces specimens to aid in the diagnosis of rotavirus or adenovirus infection.

- Detection: Rotavirus or Adenovirus antigens
- Specimen: Feces
- Sensitivity: 100.0%
- Specificity: 99.0%
- Time to Result: 15-20 minutes
- Shelf life and storage temperature: 24 months at 2-30°C

## Materials Provided

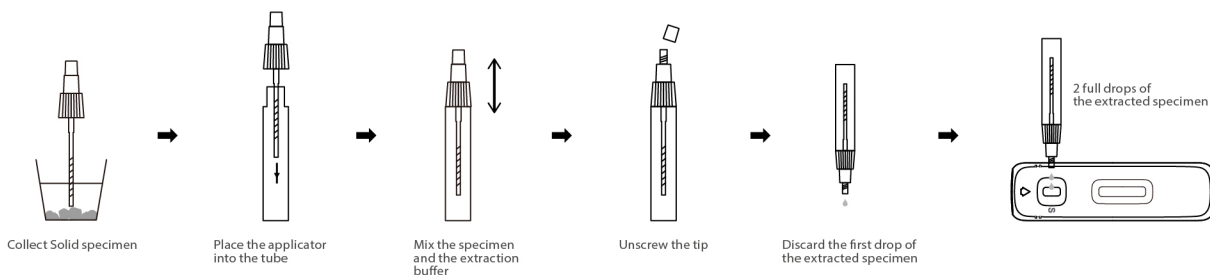
- Test Cassettes
- Droppers
- Specimen collection tubes with extraction buffer
- Package insert

## Test Procedure and Interpretation

### Test Procedure

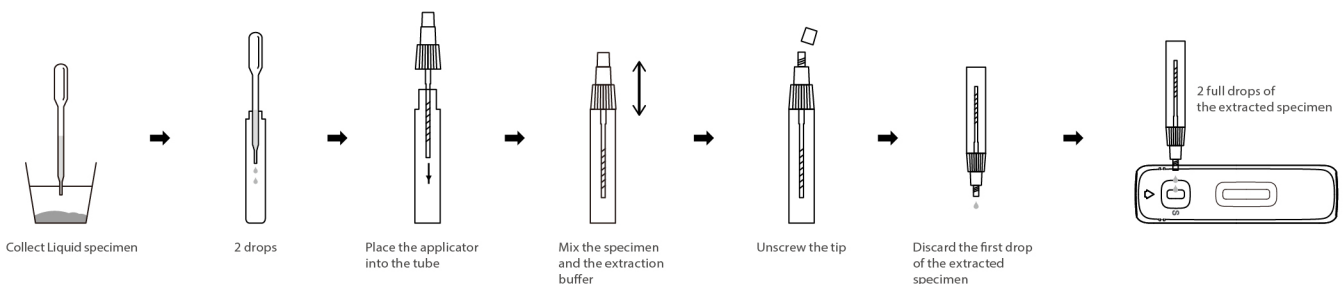
#### For Solid Specimens

- Randomly collect approximately 20 mg of feces from at least 3 different sites of fecal specimen.
- Recap the specimen collection tube and mix the specimen and the extraction buffer well.
- Unscrew the tip and discard the first drop of the extracted specimen.
- Add 2 full drops of the extracted specimen.



#### For Liquid Specimens

- Transfer 2 drops (approximately 50  $\mu$ L) of fecal specimen into the specimen collection tube containing the extraction buffer.
- Recap the specimen collection tube and mix the specimen and the extraction buffer well.
- Unscrew the tip and discard the first drop of the extracted specimen.
- Add 2 full drops of the extracted specimen.



# Interpretation

Read results at 15-20 minutes.

